



School Safety Report





School Safety Assessment Overview

2018-2022 Focus

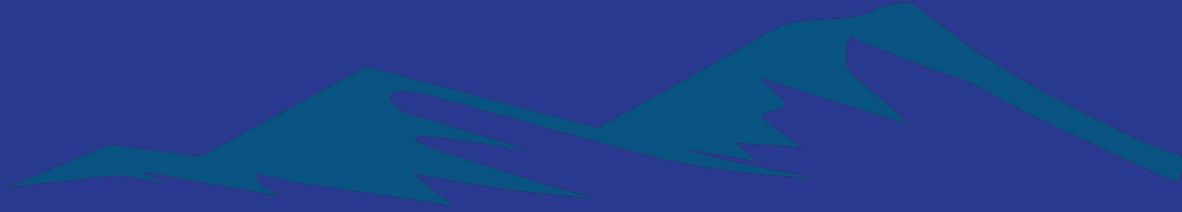


- Earthquake preparation
- Wildfire threat
- Raptor Implementation
- COVID-19 Mitigation
- Cybersecurity

Scope



- Complete hazard and vulnerability assessment at every school
- Develop report indicating trends and recommendations at District level
- Provide actionable guidance
- Suggest focus areas for Safety Committee work between 2023-26



Saddleback Valley Unified School District

Hazard Identification & Vulnerability Assessment

Charge

“The entity shall identify hazards, monitor those hazards, the likelihood of their occurrence, and the vulnerability of people, property, the environment, and the entity itself to those hazards.”

“Hazards to be evaluated shall include the following:

- (1) Natural hazards (geological, meteorological, and biological)
- (2) Human-caused events (accidental and intentional)
- (3) Technological-caused events”

Definitions

HAZARD: Any situation or thing capable of causing harm or damage

EXPOSURE: Proximity to hazard

RISK: The possibility of harm or damage

THREAT: A hazard exposure with a likelihood of harm



Hazards: Natural / Human / Technical

- Active Violence Event
- Biohazard / Infectious Disease
- Bomb
- Chemical Release
- Drought
- Earthquake
- Fire
- Flood/Tsunami/Dam Failure
- Hostage
- Water Contamination
- IT Attack/Failure
- Missing Persons
- Nuclear/Radiological Release
- Riot/Protest/Civil Unrest
- Terrorism/Hate
- Utility Outage
- Vector
- Storm

Natural Hazards

Drought

Earthquake

Fire

Flood

Landslide

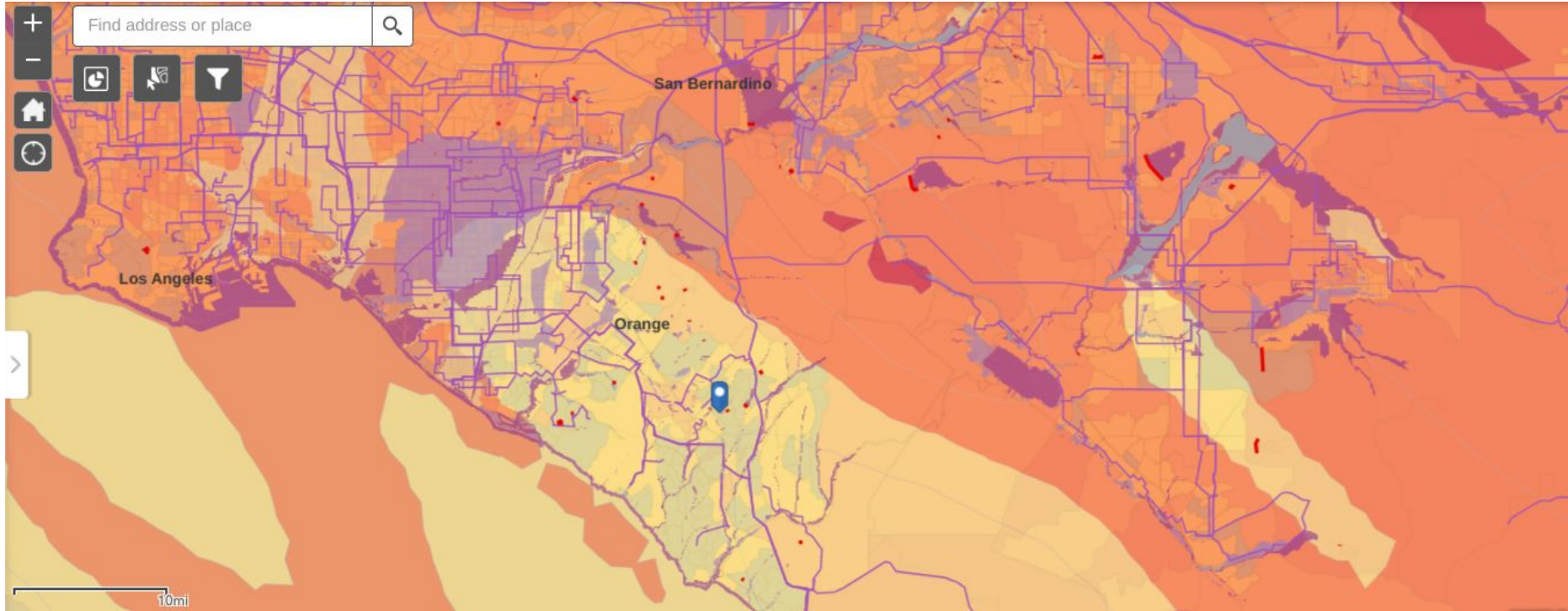
Vector

Storm

Wildlife

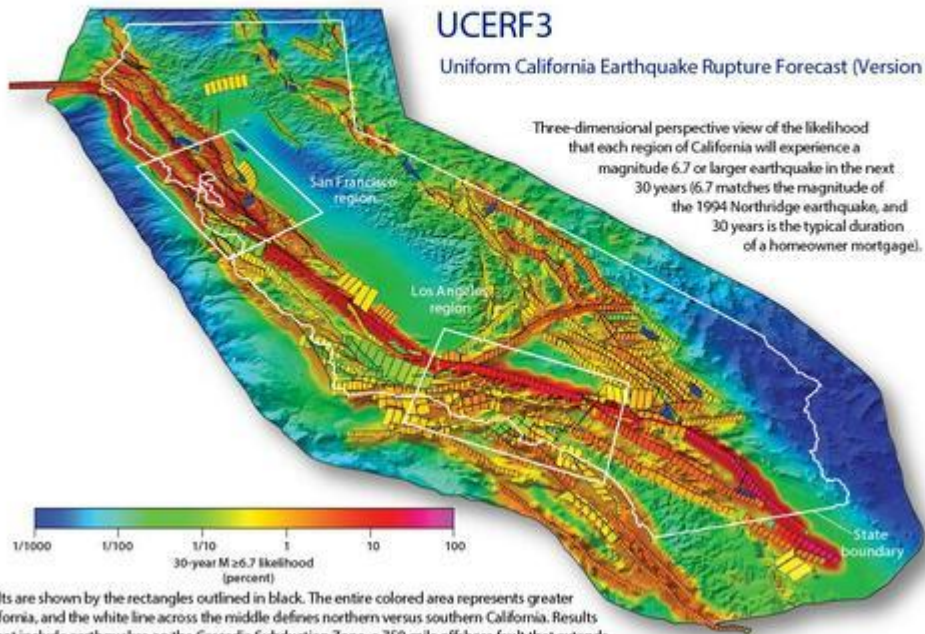
Wildland fire

Resilience Analysis and Planning Tool



UCERF3

Uniform California Earthquake Rupture Forecast (Version 3)



Faults are shown by the rectangles outlined in black. The entire colored area represents greater California, and the white line across the middle defines northern versus southern California. Results do not include earthquakes on the Cascadia Subduction Zone, a 750-mile offshore fault that extends about 150 miles into California from Oregon and Washington to the north.

Earthquake

FACTORS

- Faults
- Ground
- Construction
- Response Capability

DISTRICT

- Multiple faults within 50 miles capable of 7.1 + magnitude quakes
- Limited liquefaction areas
- Strong construction and good mitigation
- Good training and improving resources

Wildland Fire

FACTORS

- Vegetation/Fuel
- Weather
- Topography
- Response Capability

DISTRICT

- Adjacent to significant wildland areas
- Subject to Red Flag conditions
- Sites in canyons and mid-slope
- Mitigation and joint agency exercises needed

Human Hazards

Active Violence Event

Arson

Bomb

Hostage

Water Contamination

Missing Persons

Riot/Protest/Civil Unrest

Staff Shortage

Terrorism/Hate

Active Violence Event

FACTORS

- Relationships
- Detection
- Access
- Response Capability

DISTRICT

- Strong student to staff relationships.
- Good reporting infrastructure
- Sites have policy of locked classroom doors
- Sites practice Lockdown procedures

Technical Hazards

- ❑ Biohazard / Infectious Disease
- ❑ Chemical Release
- ❑ Water Contamination

- ❑ **IT Attack/Failure**
- ❑ Nuclear/Radiological Release
- ❑ Utility Outage

IT Attack / Failure

FACTORS

- Devices
- Access
- Detection
- Response Capability

DISTRICT

- Growth of devices over the last two years
- Good access authorization programs
- 24/7 monitoring for attacks
- Response framework in place

Recommendations



- Improve Perimeter Control
 - Funding to implement at key locations
- Supplies
 - Additional Stop-the-Bleed kits
 - Upgraded medical equipment
- Improve Perimeter Surveillance
 - Funding to pilot perimeter surveillance technologies
- Training
 - Enhance and grow current Emergency Management Program



Questions ?