

SILVERADO HIGH SCHOOL – PROPOSED SITE PLAN



General Notes:

The level of modernization can range from major to minor upgrades and has been identified as part of the prioritization process.

Priority 1

- Essential projects to support the current and future District educational program.
- Projects that need to be addressed as soon as funding becomes available (ex. fire, life, safety, HVAC, roofing, asphalt/concrete & drainage).
- Major modernization of permanent facilities over 25 years old and not previously renovated or last modernization prior to 2005.

Priority 2

- Minor modernization of some permanent facilities in need of renovation.
- Major modernization of portable facilities over 20 years old not previously renovated.
- Projects that add to, provide new or renovate facilities to improve or update school site (ex. drinking fountains, marquee, landscaping, shade structure & way finding).

Priority 0

- Projects that enlarge facilities.
- New facilities that enhance the educational programming.
- Major modernization of portable facilities over 20 years old (declining enrollment sites).
- Option for portables to permanent construction in lieu of modernization.

- Life cycle costs and needs may occur in all phases and may have an impact on planned projects. An allowance has been considered for some critical projects and can be identified at the design phase based on District/School Site priority.
- New Buildings/New Construction locations are conceptual at the Master Planning stage and subject to change or be adjusted based on program development, detail design, detailed site survey/ site investigation, location of utilities, soils conditions, DSA, and other Agency requirements.

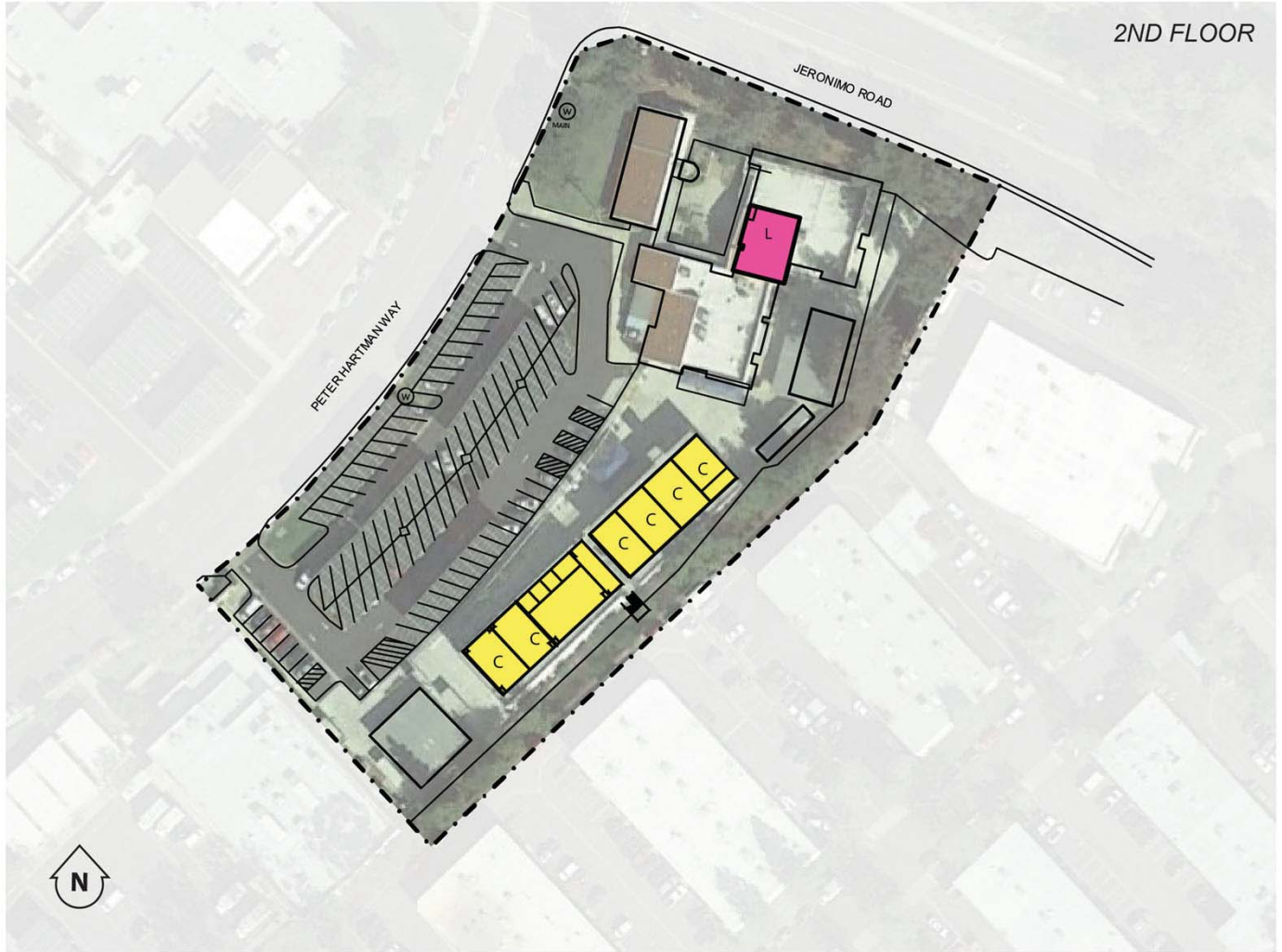
Refer to Facilities Master Plan – Financial Summary for cost of potential projects identified.

Projects have been reviewed for priority based on need as funding becomes available. See next page for a list of potential projects.

A program level master budget has been drafted based on 2019 industry costs. Each phase will need to be adjusted for escalation, inflation, and overall market conditions per year as that phase of projects are implemented. The financials can also be referred to as the master budget. The master budget establishes project costs in two priority phases and a third phase noted as "other" over the next 10 years to account for immediate and future needs as part of the road map for long-range facilities improvements.

- NEW CONSTRUCTION
- MAJOR MODERNIZATION
- MINOR MODERNIZATION
- RECONFIGURATIONS
- REMOVAL/DEMOLITION

SILVERADO HIGH SCHOOL – PROPOSED SITE PLAN



General Notes:

The level of modernization can range from major to minor upgrades and has been identified as part of the prioritization process.

Priority 1

- Essential projects to support the current and future District educational program.
- Projects that need to be addressed as soon as funding becomes available (ex. fire, life, safety, HVAC, roofing, asphalt/concrete & drainage).
- Major modernization of permanent facilities over 25 years old and not previously renovated or last modernization prior to 2005.

Priority 2

- Minor modernization of some permanent facilities in need of renovation.
- Major modernization of portable facilities over 20 years old not previously renovated.
- Projects that add to, provide new or renovate facilities to improve or update school site (ex. drinking fountains, marquee, landscaping, shade structure & way finding).

Priority 0






- Projects that enlarge facilities.
- New facilities that enhance the educational programming.
- Major modernization of portable facilities over 20 years old (declining enrollment sites).
- Option for portables to permanent construction in lieu of modernization.

- Life cycle costs and needs may occur in all phases and may have an impact on planned projects. An allowance has been considered for some critical projects and can be identified at the design phase based on District/School Site priority.
- New Buildings/New Construction locations are conceptual at the Master Planning stage and subject to change or be adjusted based on program development, detail design, detailed site survey/ site investigation, location of utilities, soils conditions, DSA, and other Agency requirements.

Refer to Facilities Master Plan – Financial Summary for cost of potential projects identified.

Projects have been reviewed for priority based on need as funding becomes available. See next page for a list of potential projects.

A program level master budget has been drafted based on 2019 industry costs. Each phase will need to be adjusted for escalation, inflation, and overall market conditions per year as that phase of projects are implemented. The financials can also be referred to as the master budget. The master budget establishes project costs in two priority phases and a third phase noted as "other" over the next 10 years to account for immediate and future needs as part of the road map for long-range facilities improvements.

	NEW CONSTRUCTION
	MAJOR MODERNIZATION
	MINOR MODERNIZATION
	RECONFIGURATIONS
	REMOVAL/DEMOLITION

Saddleback Valley Unified School District

SILVERADO HIGH SCHOOL

Site No.	33	Building / Projects	Year Built	Mod.	Gross SF	Modernization
1	Permanent	ADMINISTRATION BUILDING	1974		2,508	Major Mod.
2	Permanent	CLASSROOM BUILDING RMS 1-13	1974	2017 partial	11,844	Major Mod.
3	Permanent	CLASSROOM BUILDING RMS 17-26	1974	2017 partial	7,566	Minor Mod.
4	Portables	CLASSROOM BUILDING RMS P1-P8	2004	2017 partial	8,502	Minor Mod.
5	Portables	PORTABLE CLASSROOM RMS 14-16	1985	2017 partial	1,920	Minor Mod.
6	Portables	CLASSROOM ATF	2004	2017	1,920	
7	Portables	PORTABLE RESTROOM	1985	2017	480	
8	Shelters	SUN SHADE COVERED AREA	2000		450	
9	Shelters	SUN SHADE EATING AREA A	2000		600	
10	Passages	COVERED PASSAGES	1974		1,870	Minor Mod.
Facilities Projects					Quantity	Site Improv.
S-1	Site	Asphalt / Concrete Repair	Exist.		1	Site
S-2	Site	Drainage Repair	Exist.		1	Site
S-3	Site	Drinking Fountains Replacement	Exist.		1	Site
S-4	Site	Exterior Lighting (Additional)	Exist.		1	Site
S-5	Site	Landscaping Replacement	Exist.		1	Site
S-6	Site	Marquee Update	Exist.		-	Site
S-7	Site	Next Generation Furniture	Exist.		1	Site
S-8	Site	Outdoor Learning Areas	Exist.		1	Site
S-9	Site	Security Cameras (Additional)	Exist.		1	Site
S-10	Site	Shade Structure(s)	Exist.		-	Site
S-11	Site	Technology Upgrade	Exist.		1	Site
S-12	Site	Parking, Drop-off and Pick-up	Exist.		-	Site
S-13	Site	Physical Education Area Update	Exist.		-	Site
S-14	Site	Repair / Replace HVAC	Exist.		1	Site
S-15	Site	Repair / Replace Roofing	Exist.		-	Site
S-16	Site	Safety Improvements (Additional)	Exist.		1	Site
S-17	Site	Wayfinding (Signs)	Exist.		1	Site